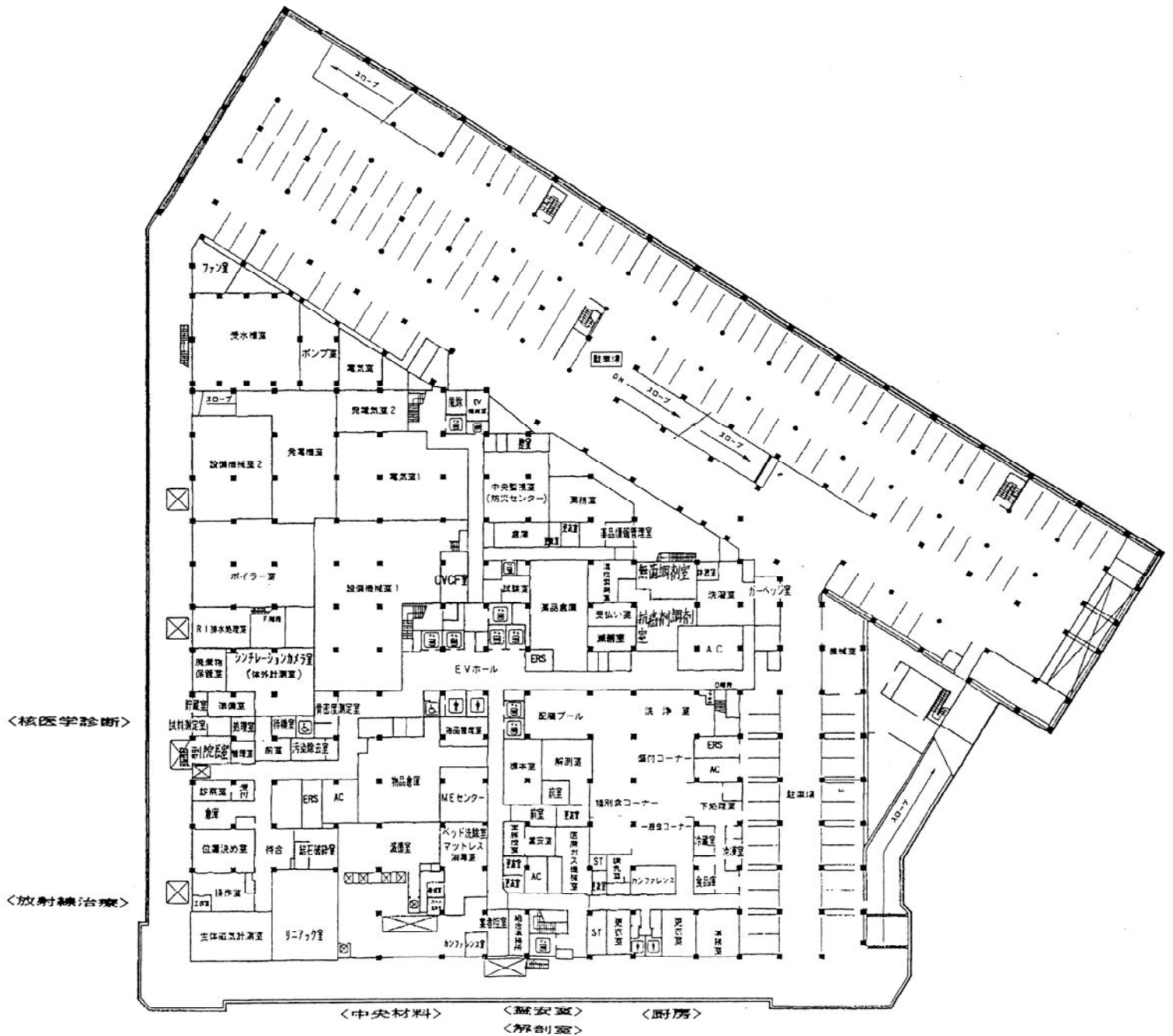
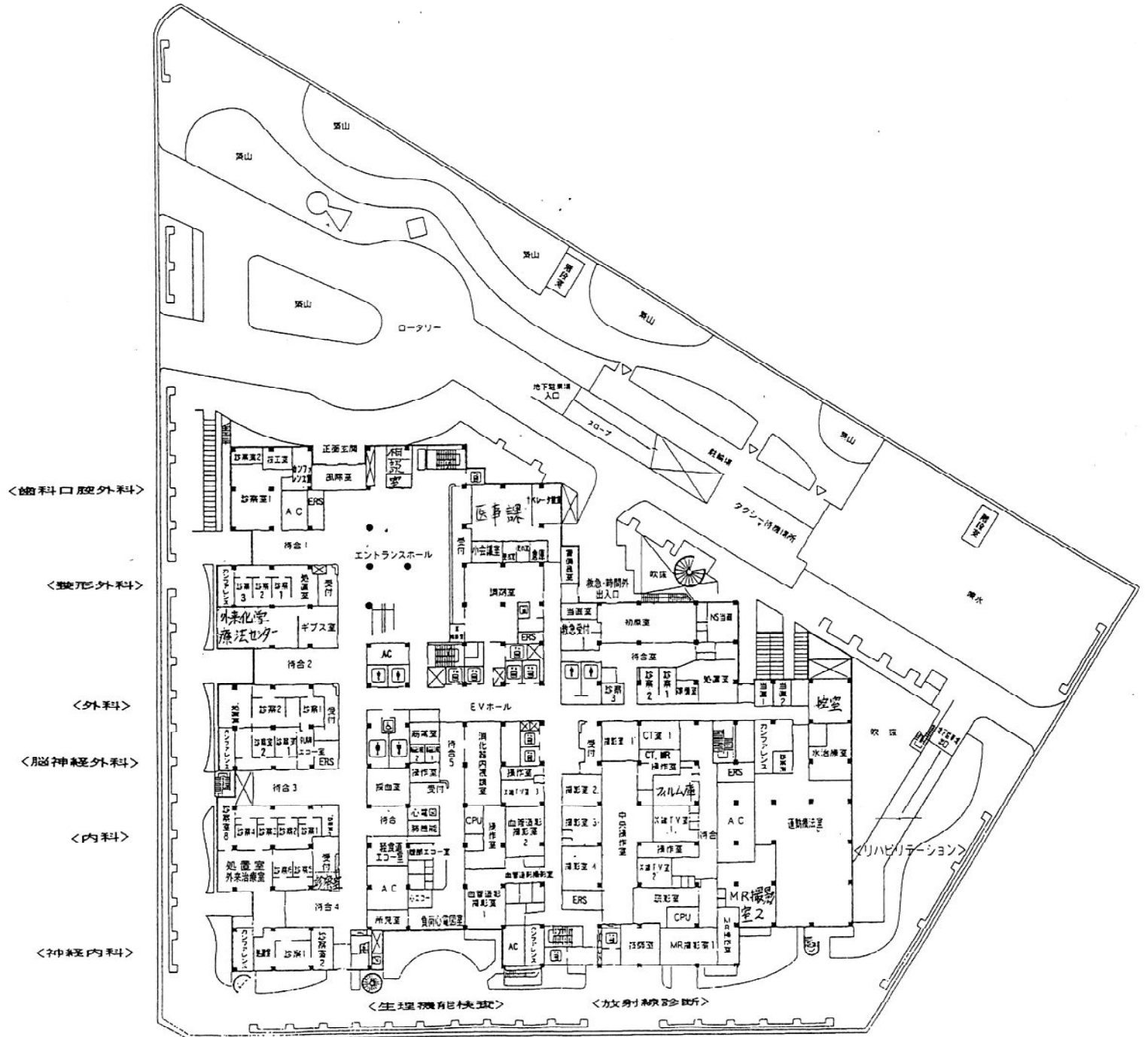


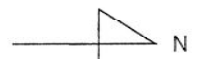
病院配置図 (B1 ~ R2)



B1階平面図 



1階平面図・配置図



<産婦人科>

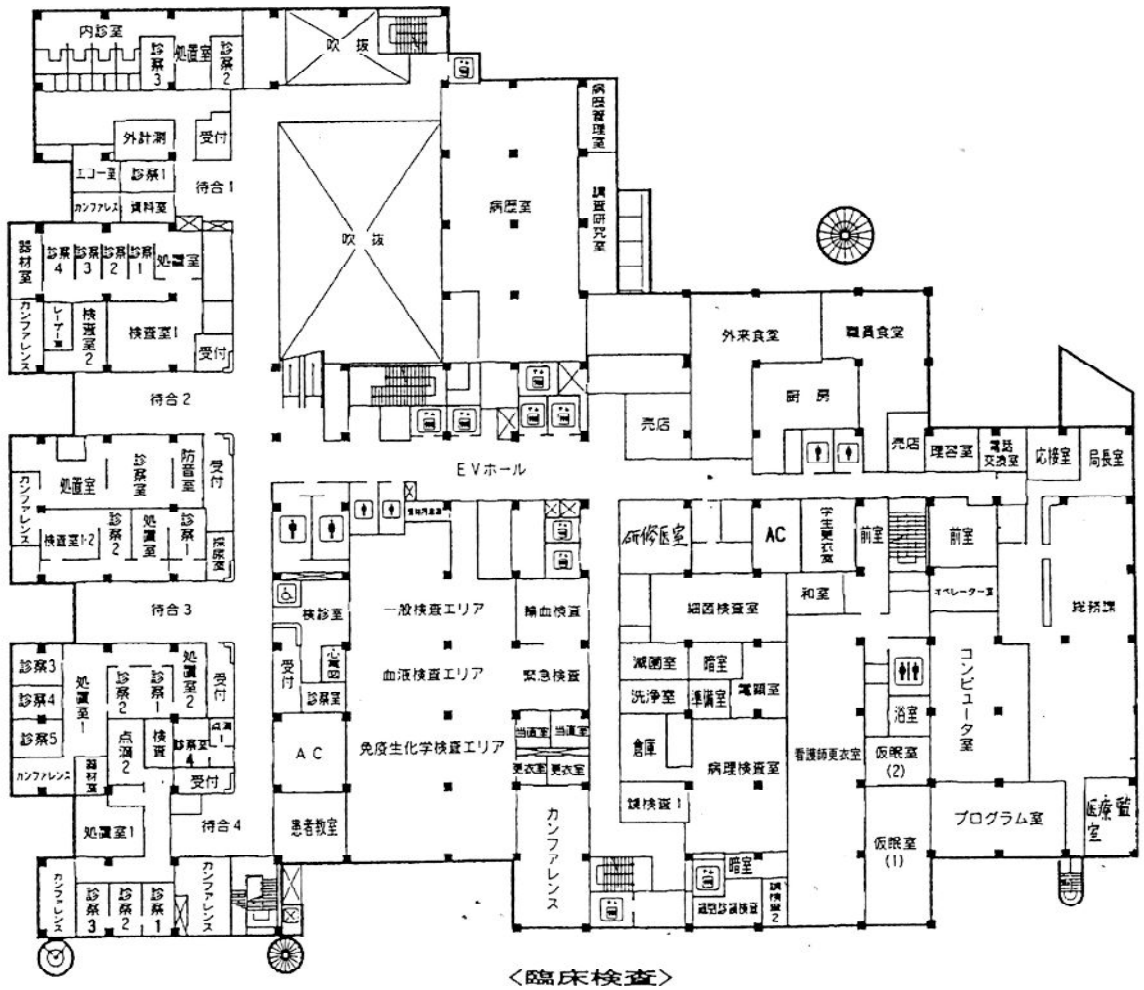
<眼科>

<耳鼻咽喉科>

<泌尿器科>

<皮膚科>

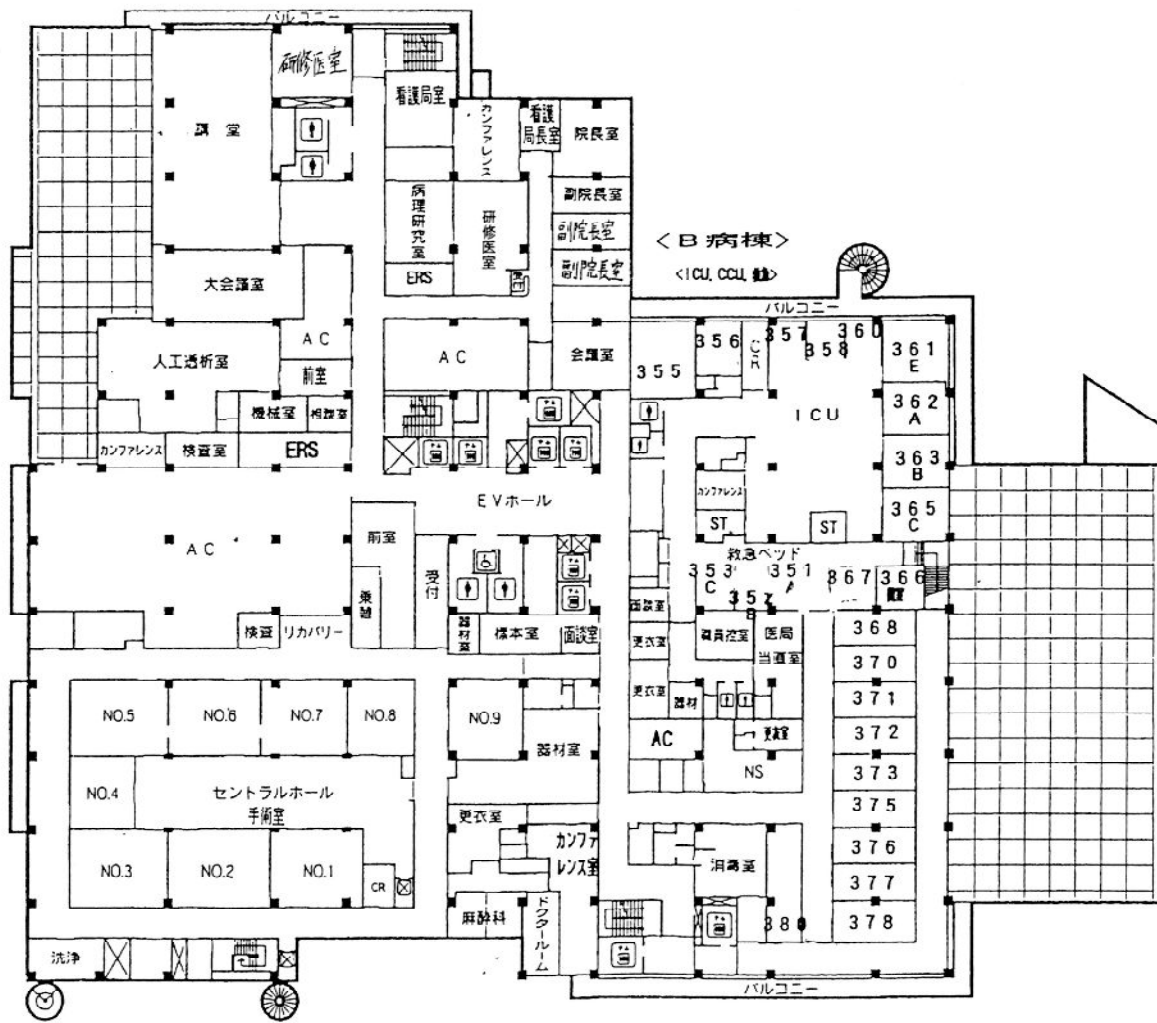
<小児科>



2階平面図

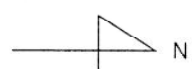


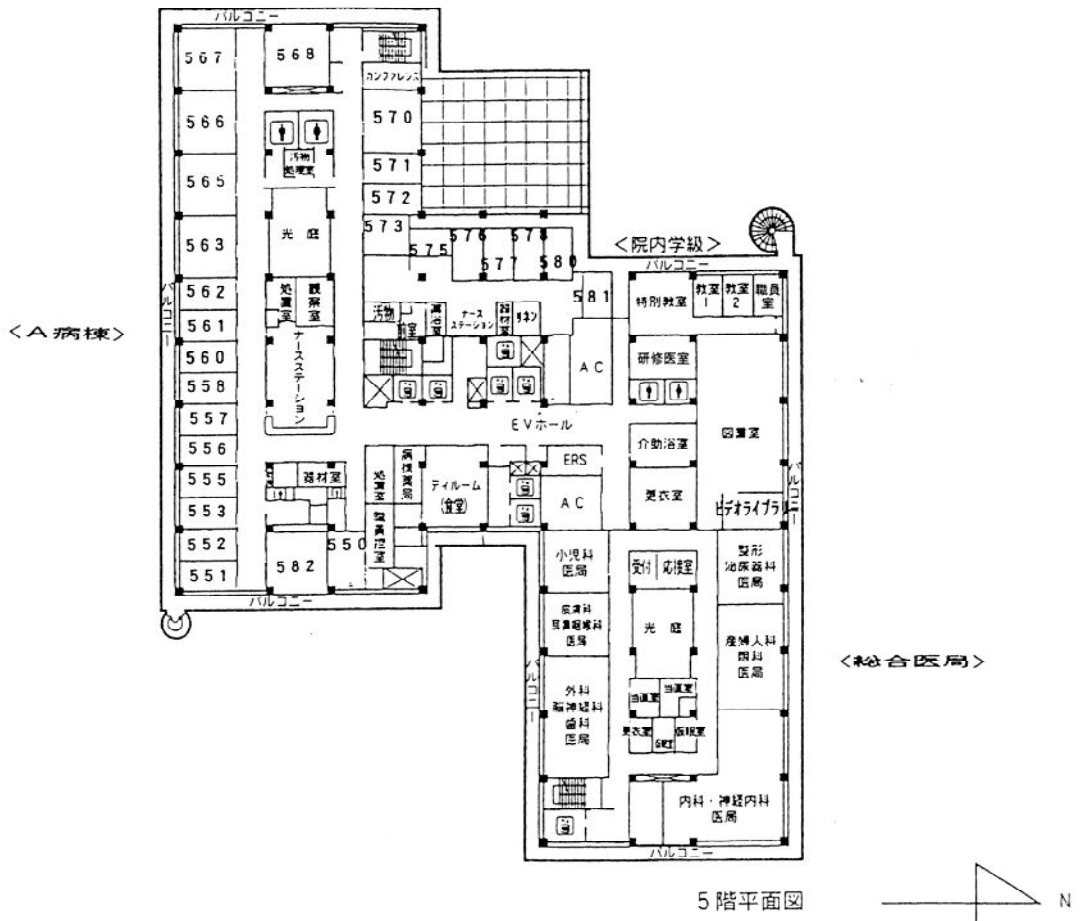
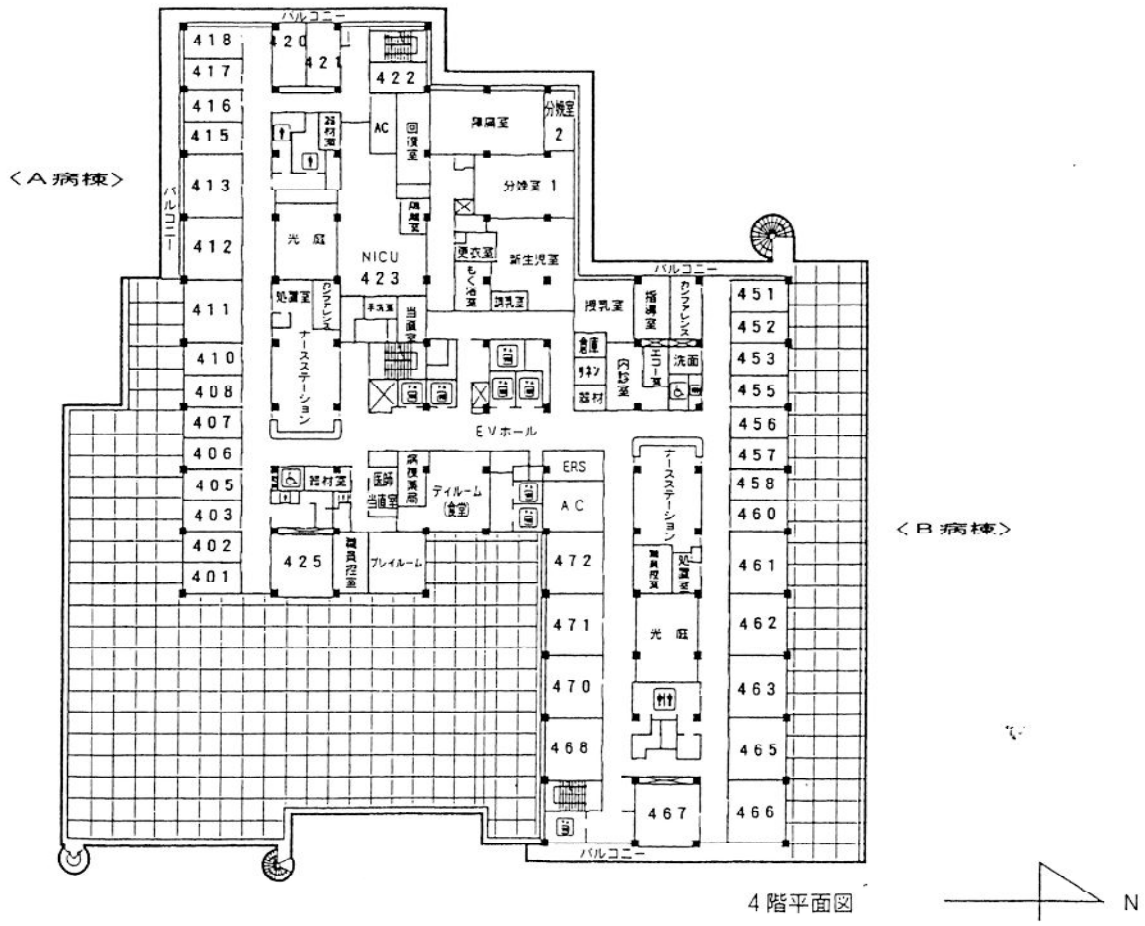
<人工透析>

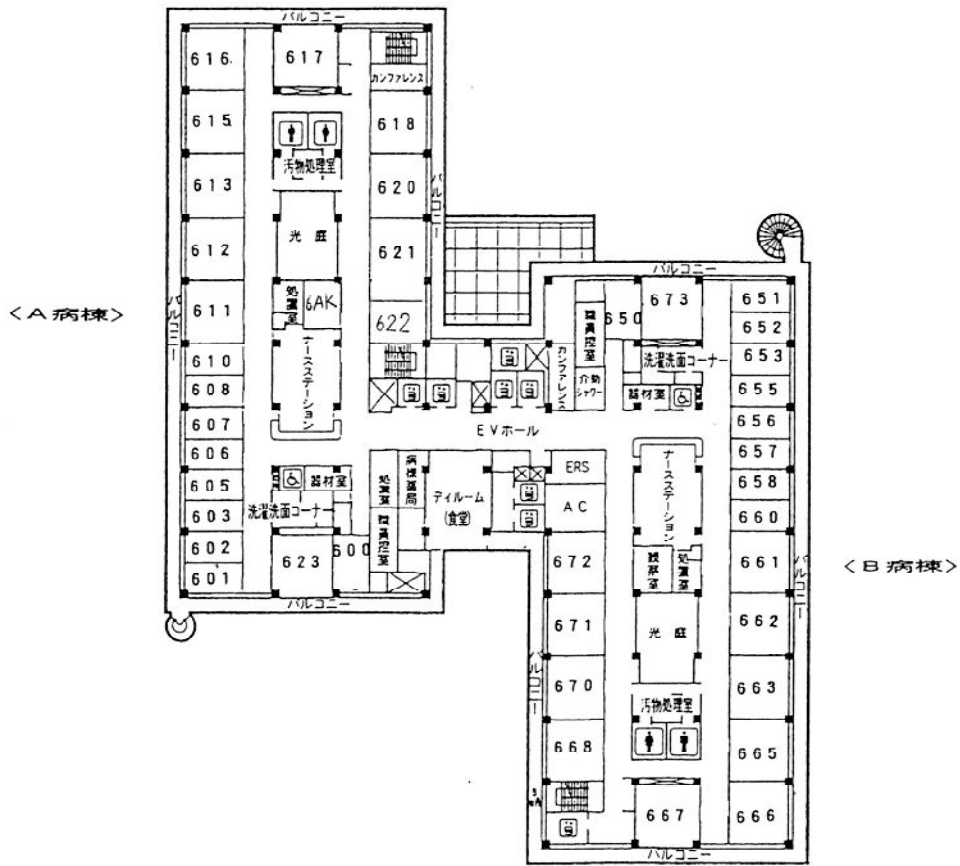


<C病棟>

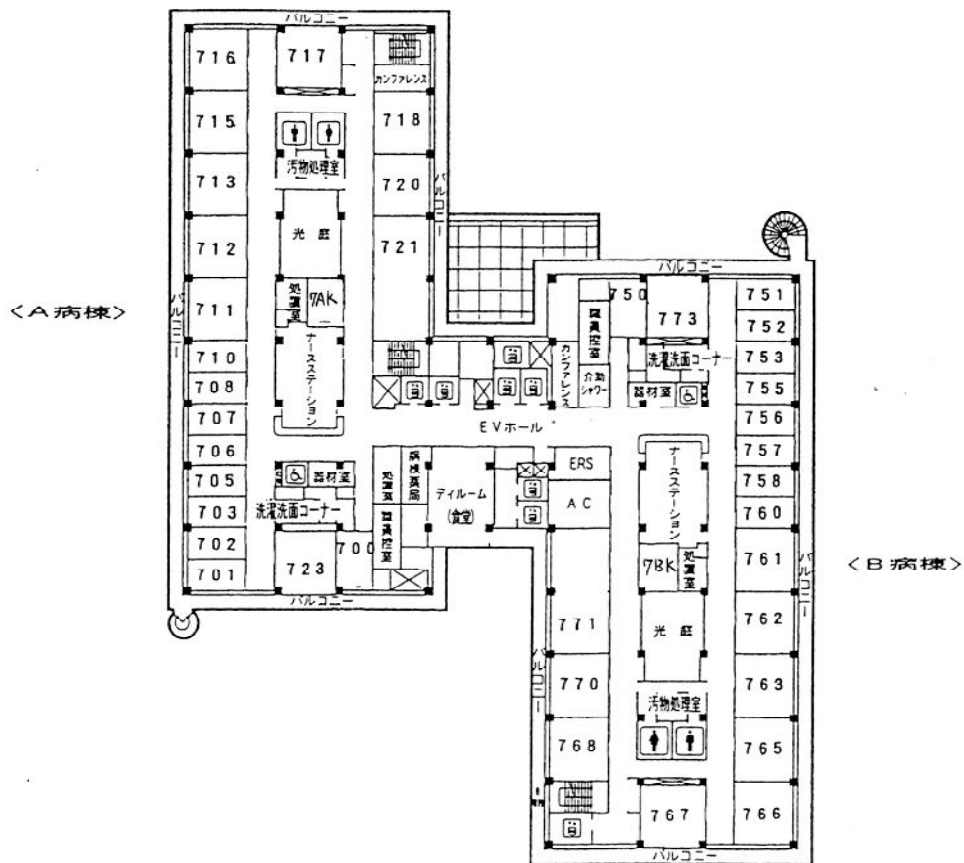
3階平面図



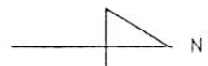




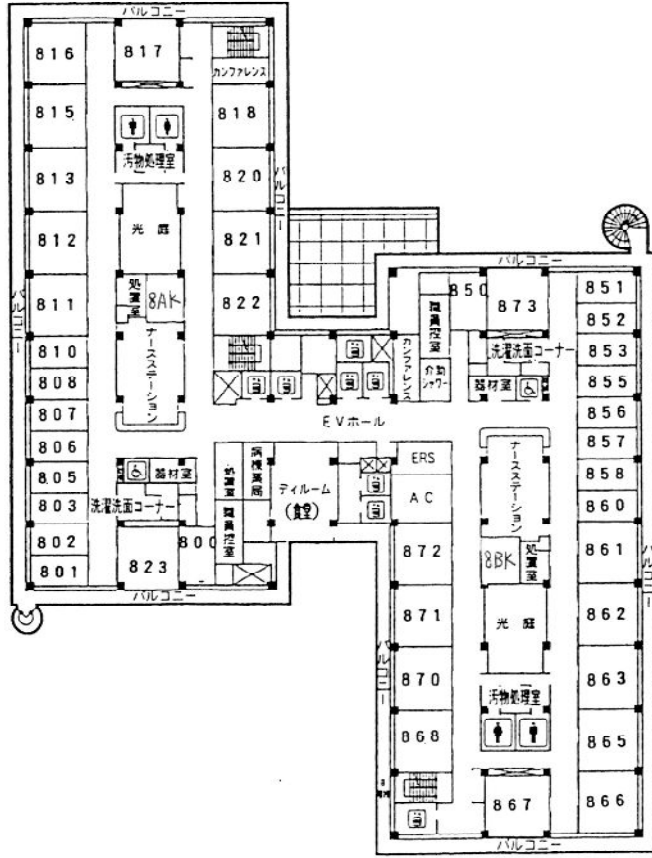
6 階平面図



7 階平面図

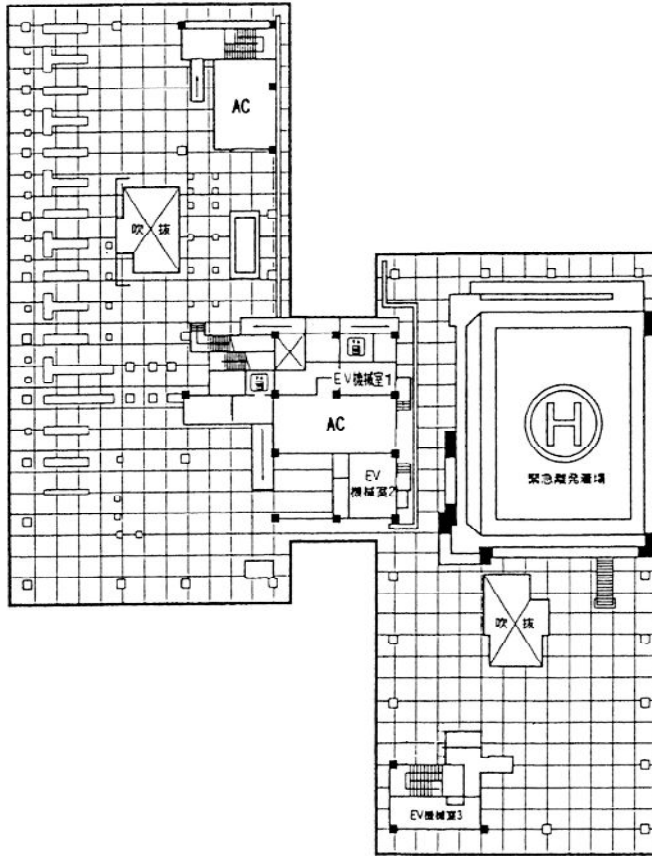


<A病棟>



<B病棟>

8 階平面図



PH階平面図

